

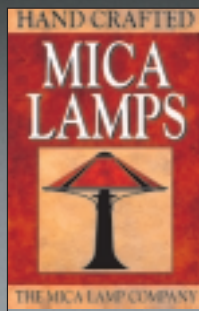
AUTHENTIC CRAFTSMAN DESIGNS

Circa 1900



#136BG L=40"

#136G L=52"



Authentic Designs
Made in the U.S.A.

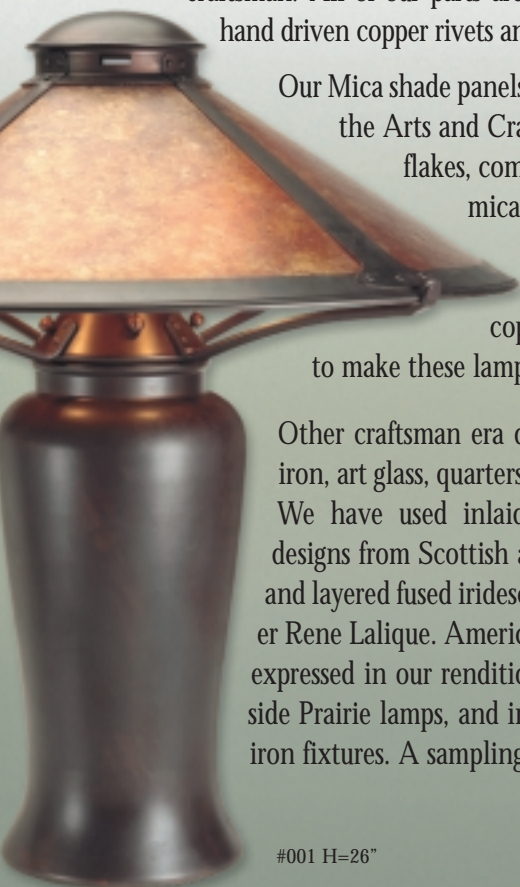


#116 Dia=34"



THE COPPER LAMP WITH THE UNIQUE MICA SHADE

Turn-of-the-century American Lighting design and craftsmanship is available today from the Mica Lamp Co. We follow the same formula as the original craftsman. All of our parts are made of solid copper, assembled with hand driven copper rivets and finished with a rich natural patina.



Our Mica shade panels are the same natural materials used by the Arts and Crafts master lamp makers. Mineral mica flakes, combined with organic shellac, make each mica shade unique with its variations of mineral deposit patterns and color tones. The famous San Francisco coppersmith Dirk Van Erp, was the first to make these lamps in 1910.

Other craftsman era designs were expressed in hand forged iron, art glass, quartersawn white oak, and solid cherry wood. We have used inlaid glass techniques to express 1890's designs from Scottish architect Charles Rennie Mackintosh, and layered fused iridescent glass in the style of French designer Rene Lalique. American design and craftsmanship is further expressed in our renditions of Architect Frank L. Wright's six side Prairie lamps, and in the 1920's California Los Feliz black iron fixtures. A sampling of this work is shown herein.

#001 H=26"



#WH02B HT=10"



#111 W=14"



#121 W=14"



#004 HT=17"



#009 HT=22"



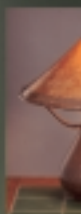
#014 HT=24"



#006 HT=18"



#003 HT=17"





#105 Dia=20"



#150 Dia=16.5"



#154 Dia=27"



#103 Dia=17"

#102 Dia=20"



#GG01 Dia=12"



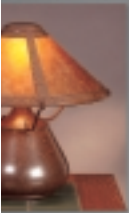
#007 HT=14"



#A26
HT=21"



#G3
HT=20"





#155 Dia=27"



#GC10
W=14"



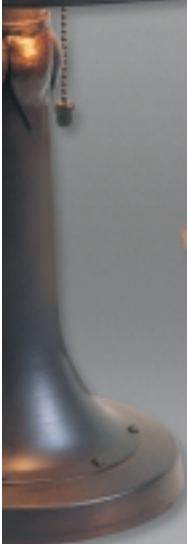
#GS1 W=14"



#130 HT=14.5"



#MT02
HT=18.3"



#015
HT=18"



#G9
HT=16"



#013
HT=24"



#039 HT=25"



#119 W=14"



#124
HT=11"



#122 HT=10.5"



#050 HT=20"



#043
HT=22"



#045
HT=21"



#042
H-27.5"



#060
HT=59"

#051 HT=59"



#075 HT=72"



#055
HT=56"



#101C
Dia=20"

#107
Dia=24"

#108
Dia=24"

#101T
Dia=20"



#LF203
W=30"



#LF201 HT=11"



#A321 HT=16"



#LF205 HT=18"



517 State Street • Glendale, CA 91203 • 800-90-LAMPS • Fax: (818) 241-5439
 Sales Office: (818) 241-7227 • High Point C&D #2B • Dallas TradeMart #4418
 Call for the Mica Lamp dealer nearest you. www.micalamps.com